

TWO-STOREY TOWN CORNER



Riverside Village

IN THE TOWN OF THAMESFORD



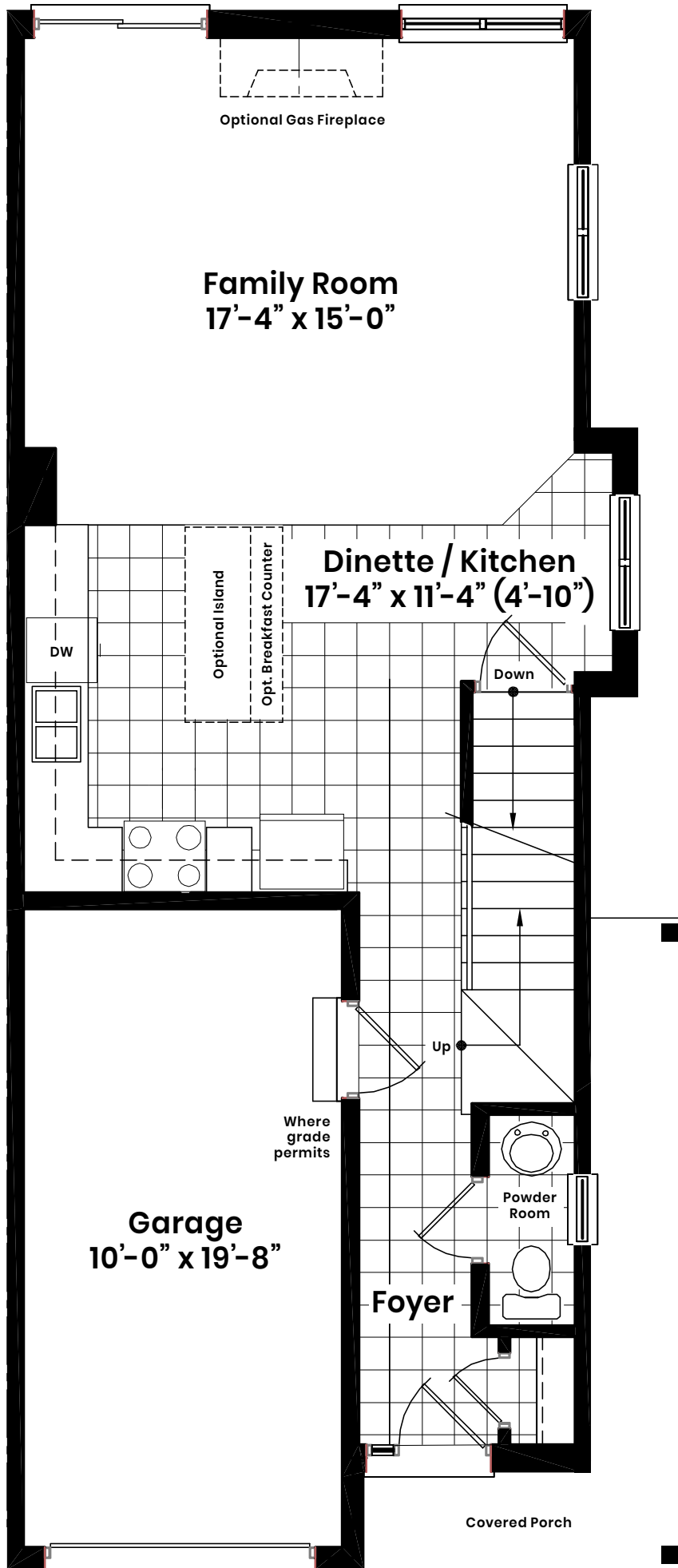
Corner unit
1,470
Square Foot

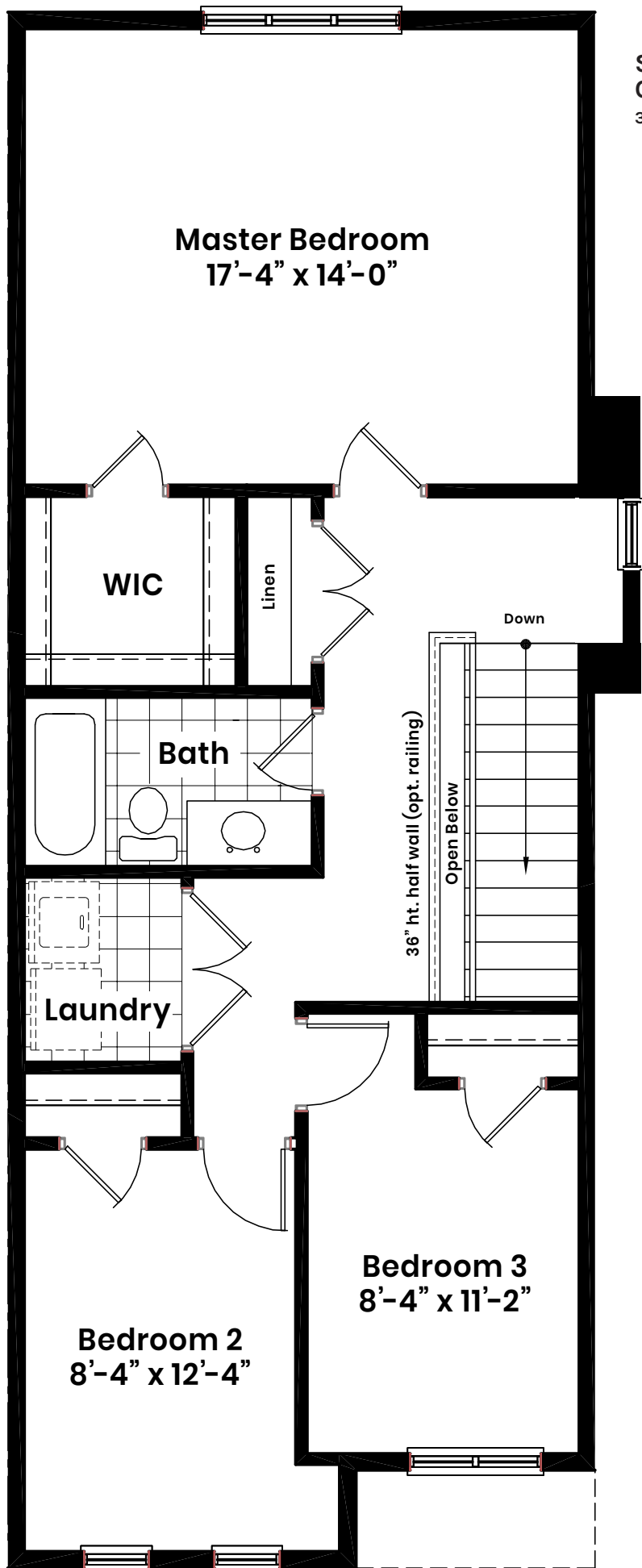
Corner unit
1,470
Square Foot

DISCLAIMER: January 1st, 2022. Illustrations are artist's concepts. Dimensions, specifications, layouts window sizes and materials are approximate only and are subject to change as provided in the Agreement of Purchase & Sale. Square footage varies according to architectural elevation. Plans may be reversed. Interior and/or exterior steps may vary due to grading. E. & O.E.

kingwoodhomes.ca

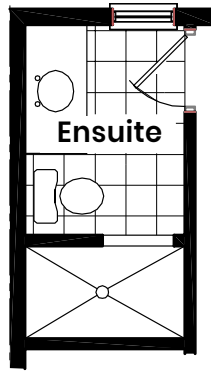
KINGWOOD
HOMES





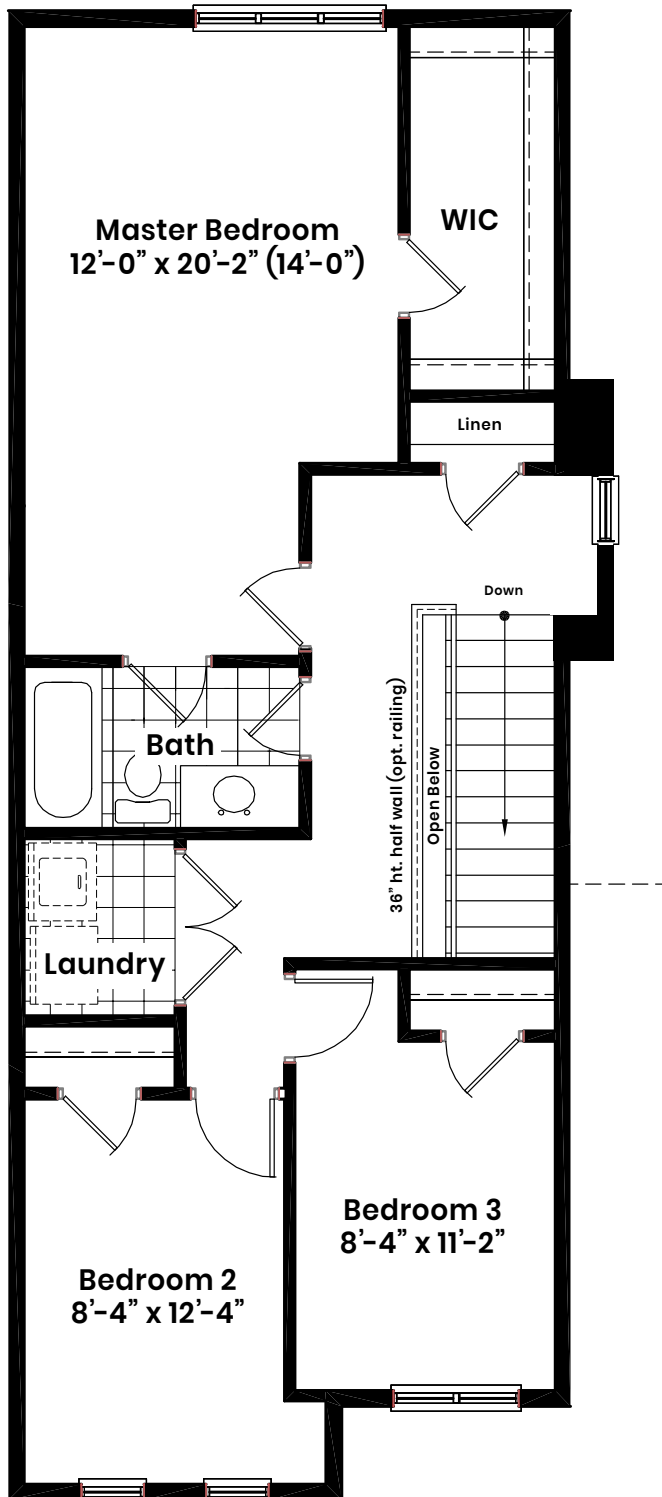
**Standard
Option A**
3 bed w/ 1 bath

(Windows layout to reflect selected unit)

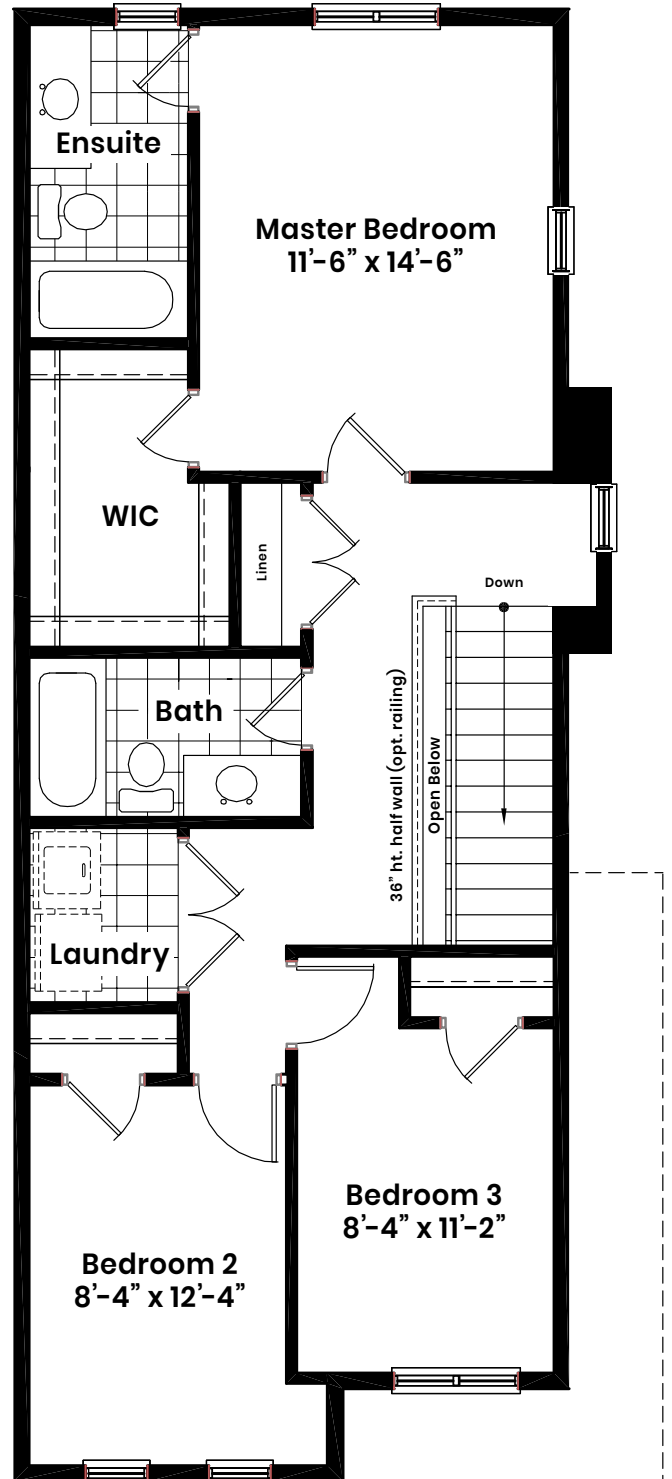


Optional 3 piece with shower

Upgrade option B
3 bed w/ 1 bath (ensuite privilege)



(Windows layout to reflect selected unit)



Upgrade option C
3 bed w/ 2 bath

DISCLAIMER: January 1st, 2022. Illustrations are artist's concepts. Dimensions, specifications, layouts window sizes and materials are approximate only and are subject to change as provided in the Agreement of Purchase & Sale. Square footage varies according to architectural elevation. Plans may be reversed. Interior and/or exterior steps may vary due to grading. E. & O.E.

